



### Key Dates Coming Up

- Monday 29<sup>th</sup> June** – Year 5 Trip to Rochester
- Thursday 2<sup>nd</sup> July** – Year 5 Isle of Wight Meeting 6.30pm
- Monday 6<sup>th</sup> July** - Year 6 Family Friendly Performance 1.45pm
- Wednesday 8<sup>th</sup> July** – Year 6 Adult Only Performance 6.30pm
- Tuesday 21<sup>st</sup> July** - Last Day of School early finish at 1.30pm
- Wednesday 2<sup>nd</sup> September** – Return to School

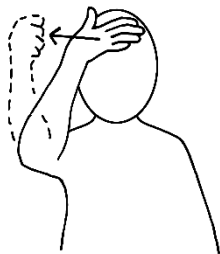
### Week beginning Monday 29<sup>th</sup> June

#### Language of the Week

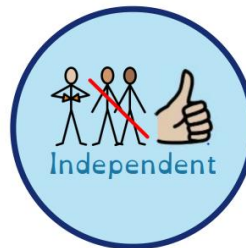
Two	Hello	Good Morning	Good Afternoon
	Agoo	Me ma wo akye (Mem- au ah-cheh) (shortened version) – Maakye (Maah-cheh)	Me ma wo aha (Mem- au ah-ha)

<https://omniglot.com/language/phrases/twi.htm>

The Makaton Sign of the Week – (feeling) hot



Character Virtue of the Week - Independent



Dear Parents and Carers,

#### Our triumphant FOR!

A massive congratulations to our magnificent FOR. What an absolute triumph last Saturday's event was for the FOR and our school community! The local and school community came out in full support with both KS1 and KS2 playground stalls and activities packed. The FOR have taken the Summer Fayre to a whole new level.

The amount of money raised we believe will be a record amount! Watch this space for the final figure...we are still counting! The funds raised makes the redevelopment of the 'Garden Area' beside the Gym on the KS2 playground a reality sooner than later. The redevelopment will be a Sensory Garden for all children to access.

I would like to say an enormous thank all of the volunteer parents for helping on the day. In addition to that a huge thank you to the staff that came along top help and support the event. I would also like to thank the local business that set up stalls to support us. A massive thank you to the Year 6 children that helped run different stalls and events. Well done to the children that performed at the event and were magnificent. Most of all, a humungous thank you to the FOR Team for organising what was truly a phenomenal Summer Fayre 2026.





We now look ahead to next academic year for the FOR events that will begin in earnest. If you are not a member of the FOR Committee and wish to join this thriving and critical team for our school, please contact them through their website.

Once again, a massive, massive congratulations and thank you to the FOR.

### **Extreme Heat**

I want to say a massive well done to the staff and children for managing and navigating the extreme heat this week. The week was very well attended by children. The school's timetable was not disrupted, because we made adaptations across the week to try and keep a calm and 'as cool environment' as possible. Thank you to all parents and carers for getting your children in this week. This was one of those weeks where we all got stuck in and worked together to keep things as normal as possible for the children. You all have done a brilliant job equipping your children with hats/caps / lighter clothing / sunscreen and water bottles. Honestly, your children deserve the highest of praise for how they have handled this week. They have been outstanding. As has the entire staff team who have been yet again the very best of professionals, and so supportive to all children.

## Art Club

Many of our children from all year groups attend our afterschool Art Club that is led by one of our parents, Oana Gavrilă. Art Club is now in its third year and continues to grow from strength to strength. This is an exceptionally popular afterschool club that is incredibly enjoyable (and therapeutic) for the children. Art club gives all of the children a chance to be expressive and develop their creative mind. The children displayed some of their artwork on Saturday at the Summer Fayre - which was very well received by parents and our community. It was a privilege to display this and huge congratulations to the children.



## Inclusion Update - Mr Hunter

As you know Mr Hunter has been on secondment at Unicorn Primary School which is also one of the schools in our Trust (Mosaic Schools Learning Trust.)

I am delighted to inform you that Mr Hunter will return to Raglan in a full-time capacity next academic year. He will again be the SaLT Provision Lead, as well as continue as the SENCO; and Inclusion Leader.

We have a highly regarded Inclusion and SEND program here in our school, and Mr Hunter is looking forward to be back at Raglan full-time from September.

## Giraffes Family Assembly

A mammoth well done to Giraffes class who soldiered on this week rehearsing; and then performing their long-awaited Family Assembly. This was definitely worth the wait! The children shared their learning in English) and performed a short play to demonstrate their reading.) We also saw their geography learning (and through dance also.) I was especially

impressed with their science knowledge and learning of life cycles of plants. This all finished with a wonderful dance finale to the iconic Madness tune, 'Our House.'

I was marvelled at the quality of the children's articulation and the way they performed and shared learning with confidence. They are definitely Year 2 ready!

A huge well done to Giraffes class, and the adult team Miss Donnelly and Miss Nash.



### Important Reminder to Parents and Carers: Start date for new Academic Year

The first day back at school for children in the new academic year is **Wednesday 2<sup>nd</sup> September**.

Tuesday 1<sup>st</sup> September is a staff training day. Children **DO NOT** attend on Tuesday 1<sup>st</sup> September.

### Music of the Week

## Lord Kitchener - London is the place for me



Windrush day - 22<sup>nd</sup> June

Windrush Day is an annual UK commemoration held on June 22 to honor the arrival of the HMT Empire Windrush in 1948 and the immense contributions of the "Windrush generation" of Caribbean migrants. It celebrates the rich cultural diversity and historical impact these individuals brought to modern British society

**How do you think the passengers felt?**

[https://www.youtube.com/watch?v=dGt21q1AjuI&list=RdGt21q1AjuI&start\\_radio=1](https://www.youtube.com/watch?v=dGt21q1AjuI&list=RdGt21q1AjuI&start_radio=1)

## Outstanding Sporting News

Great news from Bromley & South East London JKA Karate Club and Raglan School! The Club (which operates here on Fridays after school weekly) took part in the National Championships on Saturday 20th June 2026. Some 828 competitors took part. It was a fierce competition but our members were well prepared.

The club won 44 medals in total and kept its place at the top of the leader board! Also, the club won the highest number of Gold medals in the Championships as well as won a trophy.

Three pupils from Raglan Primary School participated: They won gold, silver and bronze medals.

They were all brilliant! This is a great performance and fantastic achievement!



## Dance Talent at Raglan

We are so excited to celebrate the amazing achievements of some of our Raglan dancers this year. The afterschool dance club run by Shimmi Shake has been full of energy, creativity and smiles, and we are incredibly proud of every child who has taken part.

In May, the Shimmi Shake Whole School Show took place at Langley Park Boys School, they performed brilliantly and showed confidence, enthusiasm and talent. They truly looked like natural performers and their dance teachers could not have been prouder of them.

If you would like to find out more about the classes or enquire about joining, please get in touch with Shimmi Shake, they would love to welcome you and your child into their Shimmi Shake family.

Please contact: [samantha@shimmishake.co.uk](mailto:samantha@shimmishake.co.uk)



## Outstanding Musical Achievement

Congratulations to one of our Year 6 pupils who achieved a Grade 1 Distinction for their Acoustic Guitar exam.

This is a terrific achievement; and music is a life-long skill to have.

Well done!



## School Meals Feedback

Our school lunch provider Olive Dining would be grateful for you and your child's feedback.

The surveys can be accessed by scanning the attached QR codes. They are quick to complete, and all responses will be treated confidentially.

The surveys will remain open until 29/06/2026



## Eco Council Corner

Eco Council have introduced new re-useable and recyclable glue sticks to try and combat waste! We have just sent off our first bag to recycle back to the company – one less bag of plastics to landfill!



Please use the link below to access the Mosaic Schools Learning Trust Equality, Diversity & Inclusion Newsletter

<https://sway.cloud.microsoft/CBPI7iGNuVJvfSko?ref=Link>





# Summer Holiday Fun

Bromley's Holiday  
Activities and  
Food Programme

**Bromley is running a holiday club  
programme for eligible children and young people**

**To find out more and to book**

Scan the QR code or go to the Bromley website

[www.bromley.gov.uk/  
HolidayActivitiesandFoodProgramme](http://www.bromley.gov.uk/HolidayActivitiesandFoodProgramme)



Funded by  
UK Government

2024 © London Borough of Bromley. A product of Design and Engagement Team  
Images by Pixels and Prints



# DANCE SUMMER CAMP

*Shimmi Shake*  
DANCE STUDIOS

📅 5<sup>th</sup>, 6<sup>th</sup> and 7<sup>th</sup> August

📍 Raglan Primary School, Raglan Road,  
Bromley BR2 9NL

🕒 9am until 5pm

- ✓ Dance, drama, singing, arts & crafts and outdoor play
- ✓ Early bird prices available until 2<sup>nd</sup> July
- ✓ Build confidence, develop performance skills, make new friends & lots of fun!

LIMITED SPACES - BOOK NOW!

ONE DAY £65  
TWO DAYS £120  
THREE DAYS £165



[www.shimmishake.co.uk](http://www.shimmishake.co.uk)



[samantha@shimmishake.co.uk](mailto:samantha@shimmishake.co.uk)



07738859586

# TENNIS & MULTISPORTS SUMMER SCOOP

📍 OWLTC BR2 7HN

**09:00-13:30 / 08:00-15:00**

**Week 1: 27-31 July**

**Week 2: 03-07 August**

**Week 3: 10-14 August**

**Week 4: 17-21 August**

**Week 5: 24-28 August**

**GROUPS BY AGE & ABILITY  
AGE 4 1/2 - 14 YEARS  
FROM £22.50 PER DAY  
4 DAY SPECIAL SAVING!**

DBS & LTA Qualified Coaches. All equipment provided.  
Bring a packed lunch. Tuck Shop at the end of the day.

**ENQUIRIES 07563 603822  
BOOK NOW [www.rawtennis.co.uk](http://www.rawtennis.co.uk)**



rawtenniskent



# NEWS FROM FOR

## **Our Busiest Summer Fair Yet!**

We were thrilled to see so many families on Saturday. Thank you for turning out in such numbers and supporting the school.

An enormous thank-you to the parents, carers, families, pupils, class-game organisers and school staff who put in the work behind the scenes and on the day. We couldn't have done it without you.

## **Raffle Prizes**

There are a few raffle prizes still to be handed out. These will be sent home in children's book bags where possible.

If your prize included vouchers, please make sure you check the expiry date on them and redeem them in time.

## **Thanks once again to all those donated or organised raffle prizes:**

\*Bayhouse Golf and Social Indoor Golf Club\* \*The Bickley Arms\* \*The Royal Bell\*  
\*Ruth Elizabeth Photography\* \*Rhino Boulder\* \*Hayes Nutrition and Wellness\*  
\*SCR Creationz\* \*Razzmatazz Theatre School\* \*Tweak Aesthetics\* \*art-K\*  
\*Virgin Active\* \*Goccer Holiday Club\* \*Kingslingo Orpington\* \*Sweaty Betty\*  
\*Flip Out Croydon\* \*Craven Cakery\* \*Umpy's Hot Sauce\* \*Priory Live Festival\*  
\*Hobbledown Heath Adventure Park\* \*Bare Necessities\* \*The Jumping Bean\*  
\*Just William's Toys\*

## **A BIG THANK YOU TO OUR SUMMER FAIR SPONSORS:**

### **Prince of Peckham Pub – Platinum Sponsor**

*We are, first and foremost, a community pub. For generations, pubs have sat at the heart of British culture, places where stories are shared, friendships are formed, and strangers become familiar faces. Our ethos is that a great pub is never just about what's poured behind the bar. It's about belonging. At Prince of Peckham, we believe community is built through warmth, openness and human connection. We want this to be a space where everyone feels welcome, somewhere you can arrive exactly as you are, find your people, and feel at home. But our purpose extends beyond our four walls.*

*We believe pubs can be a force for social good, creating meaningful impact, strengthening communities, and supporting the people who live within them. Whether you come for conversation, celebration, comfort or connection, our doors (and our tables are open to all!) Located in SE15 [www.princeofpeckham.co.uk](http://www.princeofpeckham.co.uk)*

### **BrightSpace Electrical – Gold Sponsor**

*Brightspace Electrical Ltd was established in 2015. We are a team of trusted and reliable Bromley based electricians, who serve customers across South-East London, Kent and the surrounding areas. We are approved contractors with the NICEIC, fully insured and all of our employees are DBS checked for your peace of mind.*

[www.brightspaceelectrical.co.uk](http://www.brightspaceelectrical.co.uk)

**Bromley Signs – Gold Sponsor**

*Bromley Signs has a long standing and successful reputation for signs. We have gone from strength to strength over the past 30 years to become one of the most popular sign companies in the south east. We are accessible to London, Kent, and the home counties. We offer a wide range of services, from a simple vinyl text to a full digital printed image. We understand the importance of receiving a professional and reliable service, competitively priced, with the personal touch, using the highest quality materials, we aim to deliver, making deadlines and schedules. Whatever your sign requirements are, please call, email to discuss further or visit our shop.*

[www.bromleysigns.com](http://www.bromleysigns.com)

**ACB Ltd – Silver Sponsor**

*Located in south-east London, ACB Ltd specialise in a wide range of ductwork ventilation services and have been a real competitor in the market nationwide since our establishment in 2004. At ACB, we engage in and complete various projects at a high degree of quality, involving the supply and installation of galvanised and fire-rated ductwork systems as well as other plant, insulation and commissioning, in both commercial and residential settings.*

[www.acbltd.co.uk](http://www.acbltd.co.uk)

**Bella Learning - Ultimate 11 Plus Tuition – Bronze Sponsor**

- Small group 11 plus tuition for children in Year 4 and Year 5.
- Online boosters, mock tests and holidays workshops.
- We prepare predominantly for the Bexley and Kent tests.
- Holistic and child-led ethos.
- No hot housing or drilling; well-being of child is highest priority.

*Some of our alumni now attend: Chislehurst and Sidcup Grammar School, Bexley Grammar, Wilmington Grammar, Tunbridge Wells Boys, Eltham College, Newstead Woods, St Olave's and Colfe's. [www.bellalearning.co.uk](http://www.bellalearning.co.uk)*

**Hayes Nutrition & Wellness – Bronze Sponsor**

*We want to help others feel healthier, happier and more confident. We help with: Weight Management; Energy and Vitality; Sports performance; Wellbeing; Immune Health; Improving skin; Accountability; Goal Setting;*

*Book your free wellness evaluation:*

[https://www.instagram.com/hayes.nutrition\\_wellness](https://www.instagram.com/hayes.nutrition_wellness)

**Razzmatazz Theatre School – Bronze Sponsor**

*Since 2000, Razzamataz Theatre Schools has been dedicated to inspiring confidence and creativity through performing arts, helping young people discover their potential and grow both on and off the stage. Our award-winning classes are led by experienced practitioners in dance, acting, and singing, with training in both musical theatre and commercial styles. By blending professional tuition with a supportive and encouraging environment, Razzamataz Theatre Schools equips children and young people with the confidence to express themselves, connect with others, and step into their future with creativity and self-belief.*

[www.razzamataz.co.uk](http://www.razzamataz.co.uk)

**The Royal Bell – Bronze Sponsor**

***The Royal Bell is a boutique hotel and members club – a Bromley cultural landmark  
reborn as a contemporary members-only lifestyle destination.***

***Brought to life through a £10M investment, The Royal Bell is home to a growing  
members community, with exclusive spaces to co-work, connect, and socialise, as well  
as four vibrant dining destinations, event spaces, and a fitness studio.***

**[www.theroyalbell.co.uk](http://www.theroyalbell.co.uk)**

**Contact FOR: [for.ptabromley@gmail.com](mailto:for.ptabromley@gmail.com)**

**FOR Events Ticket Sales: <https://www.pta-events.co.uk/friendsofraglan/>**

**Pre-loved Uniform Sales: <https://friends-of-raglan.sumupstore.com/>**

**Follow us on Instagram: <https://www.instagram.com/friendsofraglan>**

**Follow us on Facebook: Raglan Primary School Friends of Raglan**

6 ACADEMY  
**6occer**

# KIDS HOLIDAY CLUB

FUN & CREATIVE  
ACTIVITIES  
FOR BOYS & GIRLS  
AGED 5-14 YEARS OLD

Short Day  
10am-3pm  
Long Day  
8am-5.45pm

Full 6 Week Holiday  
Wed 22<sup>nd</sup> July -  
Friday 28<sup>th</sup> August

Short Day  
£22  
Long Day  
£37

## Activities

- ✓ Football, Basketball
- ✓ Singing, Dance
- ✓ Arts & Crafts, Painting
- ✓ Nature Trail/Hunt
- ✓ Many More Activities

## Raglan Primary School

Jaffray Road  
Bromley, BR2 9NL

### Registration Link

[www.6occer.com/school-holiday-courses](http://www.6occer.com/school-holiday-courses)

  
Ofsted  
Good  
Provider

More Information

07858 565757

[info@6occer.com](mailto:info@6occer.com)



## **Attendance and Punctuality Information**

As you know we expect your children to be in school every day and arrive on time. Being in school every day and on time means that children will be accessing the full curriculum; and in the routine from the beginning of the school day. We appreciate and understand that children will be off school when they are ill. To be clear, if a child vomits, has diarrhoea, or both they should be away from school for 48 hours after the last episode. If a child is running a temperature they should also be kept off because this is often the infectious time for colds, flu and infections. We expect parents and carers to inform the school immediately and by 9am if your child is off ill. You should call in or email the admin team.

We also appreciate and understand that on occasion traffic can cause lateness. That said, we do expect children to be in school on time, daily.

**If a child's attendance is 90% or below we have a legal obligation and government statutory expectation to act on this. The government refer to attendance at or below 90% as 'Persistence Absence.'**

The following is the process that we will be undertaking when your child's attendance is at 90% or below:

**Step 1** – general letter as a reminder that your attendance is below the expected 90%.

**Step 2** – if it stays this way for the next half term, we will invite you for a meeting with Mrs Collins and Mrs Powell.

**Step 3** – for sustained persistent absence over another half term, you will be required to meet with Mrs Collins and I.

**Step 4** – if persistent absence continues for a further half term, we are required to make a referral to the Education Welfare Service, who will then contact you and the school, to establish next steps. This may be a formal action plan constructed by the Education Welfare Service. This may include an 'Early Help' referral with the Local Authority.

**Step 5** – should persistent absence continue after this; the school is legally required to make a social care referral.

For children that have chronic and ongoing medical needs, we will clearly be taking this into consideration. Parents and carers must provide the medical professional documentation supporting the medical ailment so that we can inform Education Welfare that this is the reason for the absence(s). We are not permitted to accept parental diagnosis or medical justification for absence.

## **Leave from School Requests**

I will not be authorising the maximum number of 5 days for any exceptional circumstances for a leave of absence, unless attendance is consistently above 97%. Even then this is not automatically granted, and I always look at every individual case on its own merit. As you know, I do appreciate many of you have family abroad, cultural and faith celebrations, as well as specific family circumstances. If parents request or take children out for leave during term time and are below 90% attendance (which is persistent absence), I will consider applying the penalty fine.

## **Penalty notices**

Under section 444 of the Education Act 1996, it outlines the legal responsibilities on parents to ensure their children attend school on a regular basis. Failure to do so is a legal offence and either a penalty notice may be issued or prosecution in the Magistrates Court. Parents/carers may be issued with a penalty notice in relation to their child's unauthorised absence at school. It is the decision of the schools as to whether absences are authorised, though they are

expected to follow Department for Education (DfE) guidance. Fines are issued per parent, per child. Each fine is £80 if paid within the first 21 days, with a further 7 days to pay the fine at £120. Failing to pay the penalty notice may result in the matter being taken to the Magistrates Court for the original offence of failing to secure your child's regular attendance at school. Parents/carers should be aware there is **no right of appeal** for a penalty notice that has been issued. If you believe the fine was issued in error, please contact the school to discuss your concern regarding the authorisation of the absence.

**Parents and Carers need to be aware that if your child is absence from school for ten or more days in a row (without explanation) they are legally considered 'missing in education.' This will result in the school making a social care referral and contacting the appropriate agencies.**