

Dear Parents and Carers,

As the school year draws to a close, the Friends of Raglan (FoR) would like to extend a huge thank you to each and every one of you for your incredible support over the past year. We'd also like to thank all the teachers and staff who have supported the fundraising efforts by giving their own time and energy to make the events fun and successful.

Whether you volunteered your time, attended an event, or simply treated your children to an ice cream at our Frozen Friday Tuck Shop – your involvement has made a real difference. Together, we've enjoyed a fantastic calendar of events, including:

🎉 Summer and Christmas Fairs 🎃 Halloween Disco
🐣 Easter Disco 🎩 Magic Show 🎬 Movie Night and 🎲 Bingo Night

The events were triumphs thanks to your continued enthusiasm and generosity.

In April 2024, we proudly funded the installation of the brand-new KS1 playground equipment – a major milestone for FoR, which saw our bank account emptied in the process! But we do not rest as KS2 has been waiting patiently for some new equipment to engage and entertain during play times.

Play is important. Outdoor play isn't just fun—it's vital to our children's development. It helps them grow stronger, learn to work together, and supports their mental and emotional wellbeing.

Unfortunately, our KS2 playground is a largely empty and uninspiring space. This lack of equipment limits their ability to play imaginatively, stay active during breaks, and enjoy the same opportunities for learning through play as their KS1 peers.

Thanks to your unwavering support, we've since raised a phenomenal £31,500 – an achievement you should all be proud of. We have been working away in the background on designs and costings, and have come up with a phased plan to invigorate the KS2 playground and quiet garden:

Phase 1:

- An exciting and interesting new playframe;
- A 6m double-sided traverse climbing wall;
- A set of monkey bars;

Phase 2:

- A pair of rotating dual basketball and netball hoops;



Phase 3:

- Redesigning the Quiet Garden;
- New Hard Landscaping;
- Soft Landscaping - planting;

Phase 4:

- Re-laying of the thermoplastic lines on the playground (netball, football, rounders and the compass).

We have 90% of funds required to procure the Phase 1 new play equipment. If we can raise the balancing 10% before the end of July, we can instruct the equipment to be installed in September. We are therefore launching a fundraising bid on GoFundMe. If anyone is able to make a donation, please use the link below:

<https://www.gofundme.com/f/KS2-Playground-Area-at-raglan-primary>

Please do share the page with family, friends, local businesses and on social media. If you're a business or organisation willing to make a corporate donation, we'd love to hear from you!

Every pound raised helps enhance the school experience for all our children, and we're excited for what next year holds. We will keep you updated over the summer via the class WhatsApp groups.

From all of us at FoR, we wish you a restful and happy summer break.

We can't wait to see you in September for more fun, community, and fundraising!

Friends of Raglan



Reglan Primary School

Quote number: 57146 Date : 11/07/2025
Outdoor Learning Consultant: IW Designer: AR

Option One

Grizedale



Pentagon
For Learning and Play



Reglan Primary School

Quote number: 57146 Date : 11/07/2025
Outdoor Learning Consultant: IW Designer: AR

Option One

Grizedale



Pentagon
For Learning and Play



Reglan Primary School

Quote number: 57146 Date : 11/07/2025
Outdoor Learning Consultant: IW Designer: AR



Reglan Primary School

Quote number: 57146 Date : 11/07/2025
Outdoor Learning Consultant: IW Designer: AR





Lush plentiful planting scheme



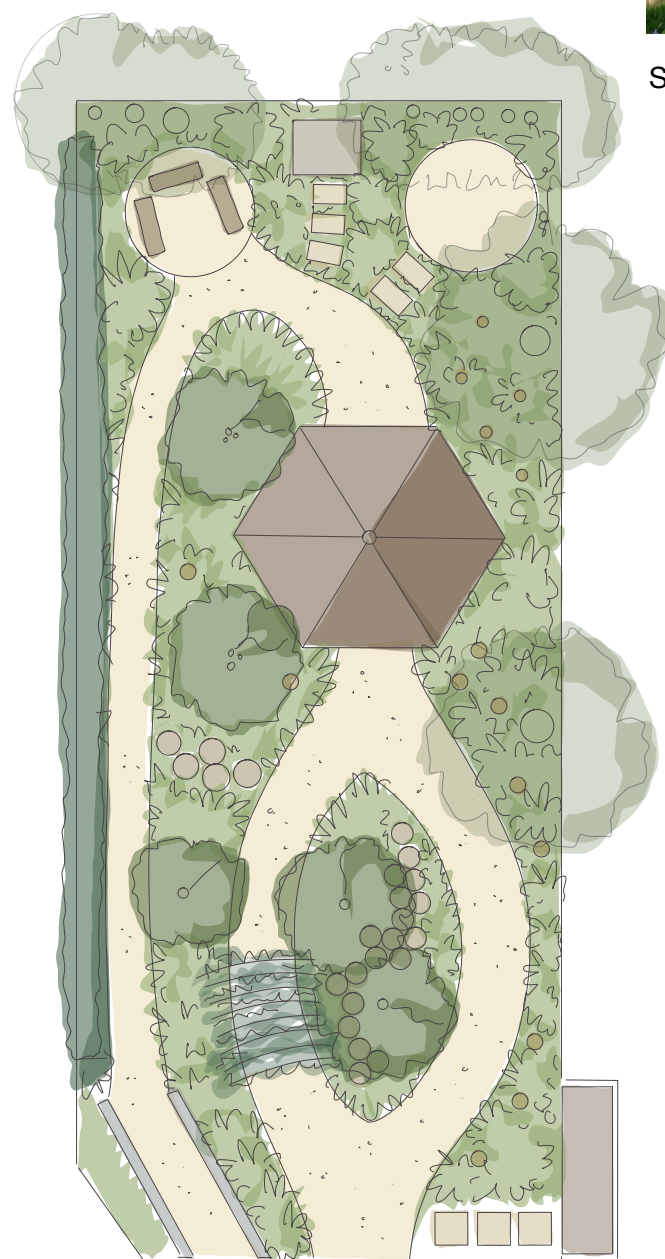
Central outdoor classroom/ shelter
Surrounded by planting



Shade tolerant wildflower
planting along bank



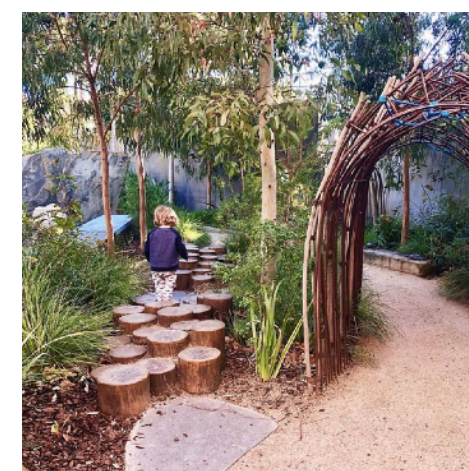
Willow tunnel



Personalised raglan
theme timber posts



Self binding gravel paths



Log pathway



Naturalistic woodland planting

Design Brief: Raglan Primary School Key Stage 2 Garden Redesign

Vision

We envision transforming the Key Stage 2 garden at Raglan Primary School into a vibrant and inspiring outdoor space where nature and learning converge. Our goal is to create a garden that embodies the principles of relaxation, discovery, and peaceful reflection, providing a sanctuary for both children and teachers alike. This redesigned garden will serve as an outdoor learning hub, fostering a deeper connection with nature while offering numerous benefits for well-being and mental health.

Core Concepts

The heart of the new garden design will be an outdoor learning hub, a central timber structure with strategically positioned benches, allowing for an easy flow of movement through the space. Climbing plants will envelop the structure, creating a sensory-rich environment and creating a calming space to learn or socialise. Surrounding this hub will be a thoughtfully designed journey through the garden, encouraging exploration and quiet discovery rather than running and jumping.

Pathways will be crafted from compacted bound gravel, ensuring a naturalistic finish and excellent drainage. Log stepping stones and potential willow tunnels will add a playful woodland element, stimulating curiosity and imagination.

Key Features

****Outdoor Classroom:**** A central timber structure with benches and climbing plants, offering a calm and inspiring space for learning and reflection.

****Sensory and Calm Spaces:**** The garden will include various seating areas at the back, providing smaller quiet spots for reading, timeouts, or small group activities. This will be especially beneficial for SEND (special education need and disability) children, offering a calming retreat from the indoor classroom environment.

****Native Planting:**** While retaining much of the existing vegetation, we will enhance the garden with native woodland planting schemes and a shade tolerant meadow, promoting biodiversity and creating a naturalistic aesthetic. A native hedgerow will be planted along the car park boundary to reinforce this theme.

****Community Engagement:**** The garden will have a strong community focus, involving children, teachers, and parents in its creation and ongoing care. Planting activities and the introduction of vertical sculptural timbers, adorned with engravings or artwork inspired by the children, will foster a sense of pride and ownership.

****Sensory Experience:**** Sensory elements, such as touch and smell, will be integrated throughout the garden. Calming smells and nature-based activities will provide positive sensory experiences, particularly benefiting those with ASD and ADHD.

****Wildlife Habitats:**** The garden will promote biodiversity with habitats for wildlife, wildflowers, and other features that support the local ecosystem.

Mission Statement

Our mission is to create a garden that slows down the pace of life, providing a serene and restorative environment for all who enter. This space will inspire both children and teachers, offering opportunities for discovery, learning, and peace. Through thoughtful design and community involvement, we aim to cultivate a garden that not only enhances the educational experience but also supports the well-being and mental health of everyone at Raglan Primary School.

By embracing these principles, the new Key Stage 2 garden will become a cherished and integral part of the school community, nurturing a love for nature and learning that will resonate for years to come.