



SEND Information Report

	Name	Date	Signature
Reviewed	Mr Martin Hunter	September 2024	<i>M. Hunter</i>
Review		September 2025	

Version Control

Date	Change
September 2023	Amendments to reflect staff changes and timings of the school day
September 2024	Changed 'SEND Co-ordinator/Manager' to 'SEND Co-ordinator'
	Changed PRP to FIP. Updated contacts. Updated
	Change of name of Bromley Local Offer to Bromley SEND Local Offer

This SEND Information report was written by the SEND Co-ordinator with input from the school's SEND Governor.

Context of our School:

Raglan Primary School is an inclusive school which is heavily involved with its local community. It is a two-form entry school with a thriving nursery and an Additionally Resourced Provision for children with severe speech and language difficulties. The school day starts at 8.55am (KS2) and 8.50am (KS1) and finishes at 3.20pm (KS1) and 3.25pm (KS2). The children are taught in mixed ability classes with 30 children in the mainstream classes. All year groups in KS2 have a shared TA in the mornings. Year 2 have a TA in each class in the mornings. In Reception and Year 1, the TAs are full time. The classes in the Additionally Resourced Provision are smaller with a higher ratio of adults to support the children's learning. The day is structured into 5 learning periods with 3 lessons in the morning and 2 lessons in the afternoon. The school has a strong network of support for all children and puts their wellbeing at the heart of everything that we do. Where a child is experiencing significant anxiety around school (Emotionally Based School Avoidance) staff work with parents, the SEND Team in school and outside agencies to provide early support and intervention.

SEND and Inclusion:

The school offers a range of provision to support children with different areas of SEND. The UK Government published a Special Educational Needs and Disabilities (SEND) Code of Practice (DfE: 2015) identifying four broad areas of need ([SEND Code of Practice January 2015.pdf \(publishing.service.gov.uk\)](https://www.gov.uk/government/uploads/system/uploads/attachment_data/file/426273/SEND_Code_of_Practice_January_2015.pdf)):

- Communication and Interaction
 - Speech, Language and Communication Needs (SLCN)
 - ASD (Autistic Spectrum Disorder)
 - SCD (Social Communication Difficulties)
 - Tourette's Syndrome

Raglan Primary School
Part of Mosaic Schools Learning Trust

- Cognition and Learning Difficulties
 - SpLD (Specific Learning Difficulties)
 - MLD (Moderate Learning Difficulties)
 - Dyslexia
 - Dyscalculia
- Social, Emotional and Mental Health (SEMH)
 - Mental Wellbeing
 - Anxiety and Depression
 - Attachment Disorder
 - ADHD (Attention Deficit Hyperactivity Disorder)
 - FASD (Foetal Alcohol Spectrum Disorder)
- Sensory and/or Physical Needs
 - Visual Impairment (VI)
 - Hearing Impairment (HI)
 - Multi-Sensory Impairment
 - Physical Disability (PD)
 - Medical Needs
 - ARFID Avoidant Restrictive Food Intake Disorder

<https://www.gov.uk/government/publications/send-code-of-practice-0-to-25>

The range of support deployed at Raglan Primary School will be tailored to individual need following thorough assessment by internal and/or external agencies. It is designed to promote pupils working towards becoming independent and resilient learners and should not be seen in isolation.

Contact Information

Who should I contact to discuss the concerns about the needs of my child? A supporting flow chart is included at the end of this report to help parents understand the processes for getting help and support in school.

If you have concerns about your child, in the first instance, you should speak to your child's class teacher. He/she is responsible for:

- Adapting and refining the curriculum to respond to strengths and needs of all pupils.
- Checking on the progress of your child and identifying, planning and delivering any additional support.
- Contributing to devising informal personalised learning plans to prioritise and focus on the next steps required for your child to improve learning.
- Applying the school's SEND policy.

Raglan Primary School
Part of Mosaic Schools Learning Trust

You may then be directed to the school's SEND Co-ordinator/Special Educational Needs Co-ordinator (SENCo) or the SENCo Assistants:

Mr Martin Hunter - Email: SENCO@raglan.bromley.sch.uk

Mrs Kirsty Allen and Miss Elizabeth Dray - Email: SENCOassistants@raglan.bromley.sch.uk

The SENCo is responsible for:

- Line managing the SEND team of staff in school and developing the school's SEND policy.
- Coordinating day to day provision for children with SEND.
- Liaising with a range of agencies outside of school who can offer advice and support to help pupils overcome any difficulties.
- Providing specialist advice and facilitating training to ensure that all staff are skilled and confident about meeting a range of needs.
- Liaising with parents where a child needs additional support during their time at the school.
- Reporting to governors.

The SEND Team in school consists of:

Who?	Job Title	Working Days	Responsibilities
Mr Martin Hunter	SEND Co-ordinator/Head of Provision	Monday- Friday	Over-seeing and co-ordinating SEND provision as above/ Co-ordinating provision for children within the specialist Language Provision.
Mrs Kirsty Allen Miss Elizabeth Dray	SENCo Assistants	Monday, Tuesday, Thursday and Friday mornings Monday-Friday afternoons and Wednesday morning.	They support the SEND Co-ordinator to: gather evidence for referrals and reviews; facilitate effective communication with parents/carers; provide training to education staff. They support the SENCo in the day-to-day management of SEND across the school.
Mrs Samantha Collins	Learning Mentor	Wednesday-Friday	She works closely with the SEND Co-ordinator and Senior Leadership Team to support children and

Raglan Primary School
Part of Mosaic Schools Learning Trust

			families at difficult times. She offers mentoring/SEMH support as appropriate for individual children and groups. She supports referrals as appropriate for children and families
Mrs Dawn Bailey	ASD Champion	One afternoon a week (flexible)	She works closely with the SEND Co-ordinator and Learning Mentor to support children with social and communication difficulties. She works with staff members and families to offer advice and support in meeting these children's needs. She supports the SENCo with gathering evidence for paediatrician referrals.
Mrs Kirsty Allen	Dyslexia Champion	One half day a week (flexible)	She works closely with the SEND Co-ordinator to identify and support children who may be at risk of dyslexia. She introduces programmes and resources to support their literacy development in school. She meets with parents to discuss strategies to use at home.
Mrs Helen Henderson	Emotional Literacy Support Assistant	One afternoon a week	She works with the SEND Team to support individual children and small groups to develop their emotional literacy. She mentors children identified as needing short term support with their emotional well-being. She assists with strategies for staff. She liaises with parents to share strategies for supporting children's emotional development.

Raglan Primary School
Part of Mosaic Schools Learning Trust

Hilary Marney	Speech and Language Therapy Assistant mainstream School/Communication Champion	Friday mornings	Works closely with SALT team to deliver tailored interventions within the mainstream. Works closely with SEND Co-ordinator to gather evidence for SALT referrals.
Danielle Bruin	Speech and Language Therapist Mainstream School (Bromley Healthcare)	In line with children's EHCPs	She works for Bromley Healthcare to deliver Speech and Language Therapy to children in the mainstream school with EHCPs. Her work is commissioned by Bromley in line with Section F of a child's EHCP.
Mrs Caryn Reddy	Speech and Language Therapist Mainstream School	Friday mornings	She works closely with the SEND Co-ordinators to identify and assess children displaying significant difficulties with language. She works with children and groups to deliver interventions as appropriate.
Mrs Lisa Wright Mrs Caryn Reddy	Speech and Language Therapists Language Provision	Wednesday and every other Thursday Monday, Tuesday, Friday and every other Thursday	They work with the Head of Provision and staff in the Language Provision to deliver therapy in line with children's EHCPs. They assess children's language for Annual Reviews and update targets on a regular basis.
Miss Tamsyn Norris	Speech and Language Teaching Assistant (Language Provision)	Monday - Friday	She works with the Speech and Language Therapists to support children's communication and language needs in the Language Provision. She reports to the therapists and Head of Provision on a regular basis.
Mrs Claudia Fenner/Mrs My Simpson/Mrs	EAL Champion	Friday mornings	They work closely with the SEND Co-ordinator and EAL Lead to support staff

Raglan Primary School
Part of Mosaic Schools Learning Trust

Margarita Recio Escobedo			to devise and implement programmes and intervention for children with English as an Additional Language.
Mrs Vikki Turner	Mental Health First Aider Wellbeing Club Leader	Flexible within the month Daily 30 minutes at lunchtime	She works closely with the SEND Co-ordinator, Learning Mentor and 'Change Team' in school to ensure appropriate support for staff and children experiencing emotional or mental health difficulties. She works as part of a team rather than in isolation to achieve positive outcomes for everyone in the school community. Provides parents/carers with termly Wellbeing Newsletters.
Mrs Alison Wilkins	Challenge Champion	One afternoon a week	She works closely with the Senior Leadership Team to identify more able children and promote challenge for these pupils across the curriculum.
Mrs Emily Freitas/Ms Geraldine Sagalla	Mindfulness Club Support	30 minutes every lunchtime	Offers a calm and safe environment during lunchtimes.
Miss Elizabeth Dray	ADHD Champion	Flexible	She works closely with the SEND Co-ordinator to support children presenting with ADHD. She works with staff members and families to offer advice and support in meeting these children's needs and gather evidence for referrals.

Head Teacher: Mr Matt De Freitas

He is responsible for the day-to-day management of all aspects of the school, including the provision made for pupils with SEND.

SEND Governor : Dr Jo Reed

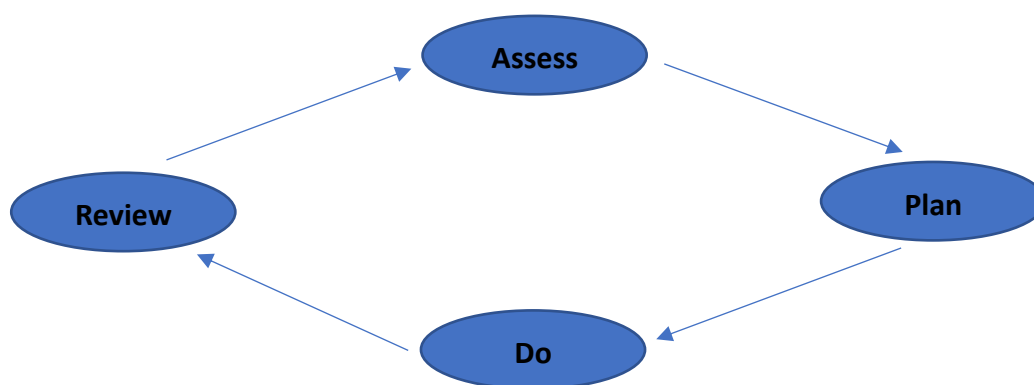
She is responsible for supporting the school to evaluate and develop quality and impact of provision for pupils with SEND across the school.

Identification of Pupils with Special Educational Needs

How are pupils with Special Educational Needs identified? How are the needs of pupils with Special Educational Needs assessed? How will I know about the support and progress of my child? Will my child have the opportunity to share their views?

While we identify additional needs under 4 main areas using observation, assessment and/or diagnoses, it is important to understand that each child is individual and the way in which their needs present and impact on their development and self-esteem will be unique.

The following cycle will then be used to provide a child with additional support:



Assess:

On-going monitoring takes place by class teachers to identify pupils who are not making expected progress or who have behavioural/emotional needs that are affecting their ability to engage in learning activities. Staff teams also meet with senior leaders on a termly basis to discuss the progress of each child. The class teacher will meet parents on a termly basis at Parent's Evenings to discuss children's individual needs, support and progress.

Plan:

Raglan Primary School
Part of Mosaic Schools Learning Trust

After discussions with key staff and parents, and if your child meets specified criteria, additional support will be put into place to provide enhanced resources and targeted small group and / or individual support to help overcome any difficulties. The views of the individual pupil or young person relating to their support will be given consideration at this stage.

Do:

Any additional support is documented on the school's Management Information System (Arbor). An additional Individual Provision Map is compiled for any pupil who has a Funded Inclusion Plan (FIP) or Education Health and Care Plan (EHCP). In consultation with the SEND Co-ordinator and parents, outcomes and targets are agreed which prioritise key areas to address and by which progress can be measured. Where external agencies are involved, their advice and recommendations are included in any support programmes. Actions agreed take into account each pupil's strengths as a starting point to address their difficulties.

In some cases, additional teaching assistant support may be allocated. This support is deployed to ensure every child can engage in lessons and wider school activities and to facilitate independent learning to support transition to adulthood.

Review:

Pupil Progress meetings are held termly to measure outcomes and review provision. The impact of support offered is considered along with the progress towards agreed targets. Support arrangements will be updated and revised accordingly.

If a child is continuing to have significant difficulties after a period of intervention, further external expertise may be required and the school may request access to additional funding for children who meet the Banded Funding criteria provided by the Local Authority. Where this is agreed, a Funded Inclusion Plan or Education Health Plan may be issued by the Local Authority based on information and views from parents, pupils, an Educational Psychologist and any other professionals working with the child.

We pride ourselves on building positive relationships with parents and families and welcome your support in building a team around your child.

Working in Partnership with Parents

How are parents consulted about a child's additional needs? How are families involved in sharing information?

We strive to work in partnership with families by developing open and honest relationships from the moment a child enters our school. We do this by:

- As part of a child's induction to Foundation Stage a meeting is organised for every child's parents to meet with the EYFS team prior to starting school. Where a child is known to have additional needs, the SEND Co-ordinator is available to attend this meeting in school.

Raglan Primary School
Part of Mosaic Schools Learning Trust

- Where a child is known to have additional needs, the EYFS Lead and SEND Co-ordinator will liaise with the pre-school setting to share information to ensure a smooth transition into school. This may include a visit to the pre-school to see the child prior to them starting school.
- Class teachers will talk to parents if they have any concerns about a child's progress.
- Parents are welcome to contact teachers or the Learning Mentor if they have any concerns about their child
- Termly parent consultation meetings with class teachers. The SEND Co-ordinator is available throughout these evenings and will try to attend any meeting where a teacher or parent makes a specific request.
- The SEND Co-ordinator has an open-door policy and are available to meet regularly with parents of children with special educational needs. They are also available via telephone or email consultation. Appointments can be booked in advance through the SENCo Assistants.
- Parents attend annual reviews for children with Education Health Care Plans or Funded Inclusion Plan. At times of transition, the SEND Co-ordinator will meet with parents before the review to discuss the transition process and what parents can do to prepare for the meeting.
- Joint meetings with the SEND Co-ordinator and a member of the SEND Team to discuss specific concerns and agree short term actions.
- The ASD Champion/ADHD Champion/Dyslexia Champion/Learning Mentor meets with families to offer advice and support for the home and/or collect information to make an onward referral for support in school.

We always take into account the pupil's views and opinions and, in agreement with parents, we will invite a child to all or some of the above meetings if deemed appropriate and considered to be in the best interests of the child.

Approaches to teaching pupils with Special Educational Needs

How will teaching be adapted to meet the needs of my child? How will the curriculum be adapted to meet the needs of my child? How will the learning environment be adapted to meet the needs of my child? What additional support is available for my child?

Teachers are skilled at adapting teaching to meet the diverse range of needs in each class. There is an expectation that when planning, teachers will take into account individual pupil's needs and requirements. Differentiation is approached in a range of ways to support access and ensure that all pupils can experience success and challenge in their learning. Teachers set different tasks for pupils of different abilities; give additional help and support to certain pupils in the class and set open ended tasks and allow pupil response at different levels. Teachers ensure that a variety of learning styles (visual, auditory, kinaesthetic) are catered for. Kinaesthetic resources are used such as Numicon, multilink, puppets, story sacks, iPads.

Grouping arrangements are organised flexibly with carefully planned opportunities for all children to work independently and receive adult support when they need it to move their learning forward. A split teaching method is used in Maths to ensure that all groups of children are challenged in their learning at appropriate points and make accelerated progress.

Support staff are used effectively to give individualised and group support. Additional adults are used flexibly to help groups and individual pupils with a long-term goal of developing independent learning skills. Monitoring takes place to avoid pupils becoming over reliant and dependent on adult support.

A range of resources and aids are accessible for all pupils to support them with their learning including now/next boards, use of ear defenders, assistive technology e.g. speech to text and pen readers, private workstations, sand timers, fiddle toys, wobble cushions, writing slopes, pencil grips, individual visual timetables and a plethora of visual supports and scaffolds to assist independence.

Access to learning and the curriculum (in addition to Quality First Teaching):

Pupils may have access to learning support staff in:

- Core subjects – Reading/ Writing/ Maths
- Other curriculum areas
- Small groups inside and outside of the classroom
- Specific Intervention programmes

Strategies/programmes to support Speech, Language and Communication:

- Speech and Language therapist advice disseminated to, and followed by, Class Teachers, Teaching Assistants or Learning Support Assistants
- Specific differentiation or modification of resources e.g. symbols; practical hands on activities, etc
- Speaking and Listening groups – Narrative, Memory, NELI, etc
- Social Skills/Social Thinking Groups

Strategies to support/develop Literacy Skills:

- Focused reading sessions with groups or pairs of children
- Small group reading programmes
- Access to structured programmes - e.g. 5 Minute Literacy Box; IDL Literacy; Toe by Toe
- Small groups to develop phonics and spelling
- Handwriting programmes - e.g. Speed Up! Programme; Write from the Start
- Precision Teaching interventions 1:1 or in a small group
- Nessy Programme

Strategies to support/develop Mathematics:

- Small group intervention programmes – booster groups
- Pre-Teaching groups/Reinforcement sessions
- Use of intervention programmes – e.g. Mathletics; 5 Minute Numeracy Box
- 1:1/paired support – Precision Teaching; Power of 2

Strategies to support/develop Social, Emotional and Mental Health Needs:

- Small group intervention programmes – e.g. Circle of Friends; Self-Esteem groups

Raglan Primary School
Part of Mosaic Schools Learning Trust

- 1:1 Emotional Literacy Support from ASD Champion, Learning Mentor, Emotional Literacy Support Assistant
- Use of programmes and visuals – Zones of Regulation; Incredible 5-point Scale
- Use of Learning Breaks and Sensory Circuits
- Listening Ear programme

Provision to facilitate/support access to the curriculum:

- Additional support from a Teaching Assistant or Individual Support Assistant
- Differentiation or modification of resources
- Additional modelling by an adult
- Adaptations to the learning environment – e.g. Workstations; Learning Breaks
- Use of TEACCH Approach
- Respite time in the school's Nurture Room
- Use of technology – software and programmes

Tests and Examinations: Access Arrangements:

For some pupils additional arrangements and adjustments can be made to enable them to fully access a range of national tests e.g. Key Stage 2 SATS (movement breaks, 1:1 reader, extra time). The school makes applications for access arrangements in line with the timescales set by the QCA.

The Speech and Language Provision:

Who can access the Language Classes? How are they managed in school? How are the children assessed? What links are there with the mainstream school?

The Speech and Language Provision at Raglan Primary School has 30 spaces for children from across Bromley who have an EHCP recognising a severe or complex language need, including DLD and verbal dyspraxia. The waiting list for places at the provision is held by Bromley Local Authority and placement is recommended by a specialist Speech and Language Therapist in Bromley Healthcare. Entry to the language provision is managed by Bromley not by the school itself.

The Language Provision consists of 2 classes, each with a qualified teacher and at least 2 teaching assistants. Staff use Makaton to support language inside the classroom and Communicate in Print symbols are used to further assist teaching and learning.

The Language Provision has a Speech and Language Therapist for 4.5 days and an in-house Speech and Language Therapy Assistant to deliver an intensive level of therapy for each child as specified in their EHCP.

The Speech and Language Therapy team work closely with the SEND Co-ordinator and class teachers to ensure a communication supportive environment and adapt teaching methods to meet the children's communication needs.

Children in the Language Provision join their mainstream peers for lunch times, playtimes and assemblies. In addition, some children join mainstream classes for other subjects, according to

their personal strengths. The children are invited to attend school visits and residential school journeys with mainstream classes and they attend any appropriate workshops in school.

Children in the Language Provision have equal access to extra-curricular activities, with some children attending both Breakfast Club and After School Club. They are welcome to attend extra-curricular activities run by school staff and outside providers.

The Speech and Language Therapist assesses the children formally and informally to monitor progress and offer advice to staff and parents on next steps for each child. The therapist attends Parents Evening appointments and Annual Reviews with teachers to jointly discuss progress and set new targets.

Teaching staff use the B Squared Connecting Steps assessment tool to measure academic attainment and report small steps of progress to parents in written reports and formal meetings.

When assessment shows that a child has made significant progress with their language and is able to access a mainstream classroom with support, plans are made to work with the Local Authority to secure a mainstream placement and agree an appropriate level of additional support on transition to the receiving school. A careful transition programme is arranged with an increased level of inclusion within a mainstream class at Raglan, sharing of information with the receiving school and induction visits to allow the transition to be successful for the family.

Outside Agencies and External Support

What support from outside agencies does the school use to support children and families?

The school works with a number of external agencies to seek advice and support to ensure the needs of all children are fully understood and met. Referrals are made by the SEND Co-ordinator after discussion with parents. These include:

Outside Agency	Link Worker	Role
Local Authority SEND Team	Ms Nerice Brown	The Local Authority have a duty to ensure appropriate provision for children with Education, Health and Care Plans. The Link Worker attends key Annual Reviews and is responsible for updating plans and supporting families with transition to secondary school.
Inclusion Support Advisory Service (ISAT)	Mrs Carol Pyne	This service is provided by the Local Authority to address concerns and offer advice and support about a child at SEND Support.

Raglan Primary School
Part of Mosaic Schools Learning Trust

(SENDAT) SEND Advisory Team	Ms Charlotte Worsley	This service is provided by the Local Authority to address concerns and offer support about a child with an EHCP.
Educational Psychology Service (EPS)	Mr Peter Maggs	His work may involve carrying out a cognitive assessment, observing children and meeting with staff and parents to offer advice on the EHCP process. His caseload is prioritised by the SEND Co-ordinators and Head Teacher. Access to the EPS is often limited and agreed at the start of a new academic year.
Sensory Support Service	Various practitioners	The Sensory Support Team (Visual and Hearing Impairment) visit regularly to observe children and advise staff on strategies and resources to support access and inclusion for children with a recognised hearing or sight impairment.
Speech and Language Therapy (Bromley Healthcare)	Various practitioners Danielle Bruin	The school makes referrals to Bromley Healthcare Speech and Language Therapy Service for initial screening of children's needs. Bromley Healthcare provide direct therapy to children with EHCPs in the mainstream school.
Words First Speech and Language Therapy	Ms Lisa Wright/Ms Caryn Reddy	The school uses Words First to provide a Speech and Language Therapist to implement advice and work

Raglan Primary School
Part of Mosaic Schools Learning Trust

		with children at SEND Support and in the Language Provision.
The Bowley Centre		The Speech and Language Therapist may refer children in the Language Provision to this service for support with an Augmentative and Alternative (AAC) device to assist their communication.
The Nuffield Centre		The SaLT supports children with severe speech sound disorders.
School Nursing Team		Offers medical advice and carries out checks at key points in a child's development.
Occupational Therapy/Physiotherapy		The school makes referrals to these services as needed. Advice on suitable resources and strategies are provided for home and school
Community Paediatric Service		Referrals are made when appropriate after full discussion with the parents about a child's presenting needs in school. Evidence is collated over time and submitted in a timely manner.
Bromley Y		Referrals are made when appropriate after full discussion with the parents about a child's emotional wellbeing. The service works with families to offer family support.
Bromley Young Carers		Referrals are made to support children who offer physical and emotional support to a family member

Raglan Primary School
Part of Mosaic Schools Learning Trust

		or friend with long term illness or disability.
SEMH Outreach		Referrals are made via the Local Authority to support the school in meeting the needs of pupils with significant SEMH needs. The selection process is rigorous and requires a high level of support and advice to already be in place.
Bromley Children's Project		This service offers impartial information, advice and support for parents of children with special educational needs as well as information and advice for all parents on their child's transition from primary to secondary school.
Information, Advice and Support Service (IASS)		This service offers impartial, confidential information, advice and support for parents/carers of children with special educational needs.
Social Care		The school will refer to Social Care when there is a concern about a child's safety and wellbeing outside of school. This may be followed by a period of multi-agency working to ensure the best outcomes for the child.
Support for Children Looked After (CLA)		The Teacher in Charge of CLA works with the allocated Social Worker and Virtual Headteacher to oversee and monitor provision for children who are in care of the Local Authority.

Support for Social, Emotional and Mental Health (SEMH)/ Pastoral Support

The social, emotional and mental health of the children at our school is of utmost importance.

The support given to children includes:

- Personal Development lessons are taught weekly covering a range of topics.
- Use of Mood Monsters in all classrooms throughout the school day
- Assemblies focusing on British Values such as democracy, respect, tolerance, hope and aspiration
- Visitors and organisations such as NSPCC are invited in to school to deliver workshops with the children
- Annual anti-bullying week
- Assemblies and activities to raise awareness e.g. Autism Awareness Week; Raising Awareness of Developmental Language Disorder Day; Dyslexia Awareness Day; Neurodiversity Awareness Week.
- Active Listening Ear programme where children can request a meeting to talk about their concerns informally
- Group and individual support from trail blazer project
- Group and individual support from the school's Emotional Literacy Support Assistant.

Strategies to support the development of pupils' social skills and enhance self-esteem:

- Small group programmes e.g. Social Skills; Social Thinking; Lego Club; Circle of Friends; Secondary Transition Groups
- Wellbeing Lunch Time Club – board games and mindfulness activities supported by the school's Mindfulness club support
- Weekly Celebration assemblies
- Class and individual reward systems
- Use of Wow! Books
- Individual reward systems
- Use of whole class recognition boards

Enabling pupils with SEND to engage in activities available to those in the school who do not have SEND:

- All of our extra-curricular activities and school visits are available to all our pupils, including our breakfast and after-school clubs.
- All pupils are encouraged to go on the residential trips in Year 4 and in Year 6. Additional support is available as necessary for pupils with high level needs.
- All pupils are encouraged to take part in sports day/school plays/trips etc.
- Risk assessments consider the needs of all pupils and ensure any reasonable adjustments are made for pupils with SEND to allow for inclusion in all areas of school life.

Strategies to reduce anxiety/promote emotional wellbeing:

- Transition support, visits and events

Raglan Primary School
Part of Mosaic Schools Learning Trust

- Use of Mood Monsters in classrooms
- 1:1 support from Learning Mentor/ASD Champion/Emotional Literacy TA
- Intervention programmes e.g. The Incredible 5 Point Scale; Zones of Regulation
- Listening Ear programme
- Use of Social Stories, visual timetables, comic strip conversations

Measures to prevent bullying:

We will not tolerate bullying of any type and if you feel your child is being bullied please refer to the school policy on bullying which can be found on the school website. Senior Leaders will work with families to eradicate incidents of bullying and support pupils to develop strategies to increase resilience in school.

Concerns or complaints regarding SEND Provision:

SEND provision and interventions put in place do not suit everyone and sometimes we need to try a few different approaches before we find the one that works best for your child. If you are unhappy with your child's support or progress you have the right to raise concerns to the school.

Please discuss any concerns initially with the class teacher/SEND Co-ordinator. This may be followed up with a discussion with the Head Teacher to solve any concerns promptly and effectively.

Any formal complaints from parents and carers will be dealt with through the procedures outlined in the school's **Complaints Policy** (available on the school's website).

Effectiveness of the Provision

*How will you assess the impact and effectiveness of the provision being provided for my child?
Will my child be able to engage in activities available to those in the school who do not have SEND?*

We will continually assess the impact that the provision is having on your child in order to ensure your child is making progress in their learning:

- Learning walks – whole class, group interventions and 1:1 support
- Observation evidence – class and intervention group and 1:1 support
- Book looks – evidence in books showing progress
- Pupil Progress Meetings – every term in school
- Intervention records
- FIP and EHCP Annual Reviews

Planning, assessment, evaluation and next steps:

- Data Collection– whole school pupil tracking system in mainstream school and use of B Squared in Language Provision classes. Updated every term.
- Intervention programmes – analysis of progress towards targets
- Pupil Passports – to consider the child's views

Supporting Pupils with Transition

How will the school help my child move to a new class / year group or to a different school?

Children and young people with SEND can become particularly anxious about “moving on” so we seek to support successful transition.

When moving to another school:

- We will contact the School SENCo and share information (with parental permission) about special arrangements and support that has been made to help your child achieve their learning goals.
- We will ensure that all records are passed on securely and promptly.
- If appropriate, we will arrange informal visits to the new school for the child to enable them to become familiar with their new surroundings.

When moving classes in school:

- An information sharing meeting will take place with the new teacher
- A transition booklet is made and shared with the child, parents and new staff
- Formal and informal opportunities are organised to visit the new class / teacher
- Resources move with the child e.g. now/next board, sloped writing boards etc.

Secondary Transition:

- The SEND Co-ordinators will attend the Primary/Secondary Transition day meeting to discuss specific needs of your child and the nature and level of support that has had the most impact (with parental permission).
- Many secondary school SENCos visit Raglan to meet groups of students and class teachers share information as appropriate at this time.
- In some cases, additional multi-agency meetings may be arranged to create a more detailed “transition” plan that may include more visits to the new school and/or additional visits from the new school.
- If appropriate, we will arrange informal visits to the new school for the child to enable them to become familiar with their new surroundings. A familiar member of staff will accompany the child in order to ease transition (if appropriate).
- All school records are passed on securely to the receiving school.

The Bromley SEND Local Offer

*What is the Local Authority (LA) Bromley **SEND Local Offer**?*

Local Authorities and schools are required to publish and keep under review information about services that are available for children and young people with Special Educational Needs (SEN) and Disabilities aged 0-25. This is called the ‘Bromley **SEND Local Offer**’. The intention of the Bromley **SEND Local Offer** is to be a valuable resource in sharing the local services and provision available to families.

Raglan Primary School
Part of Mosaic Schools Learning Trust

For further information on how we support pupils with disabilities please refer to our Accessibility Plan and our Special Educational Needs (SEND) and Inclusion Policy on our school website.

You can access the Bromley **SEND Local Offer** at the following web address:

www.bromley.gov.uk/localoffer

Other services available to support families with children with additional needs:

Information, Advice and Support Service (IASS)

<https://bromleyiass.org.uk>

Bromley Parent Voice

www.bromleyparentvoice.org.uk



What to do if I am concerned about my child's learning

